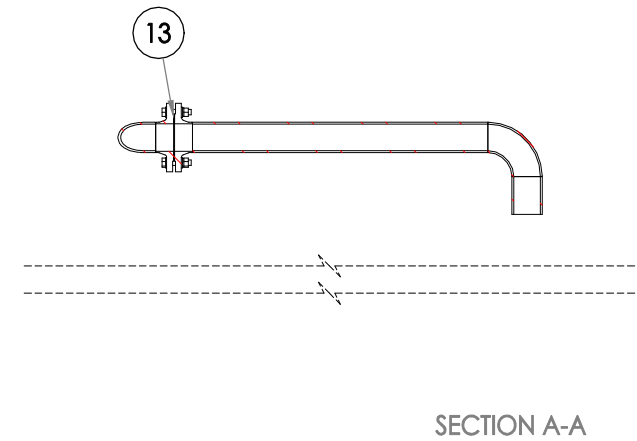


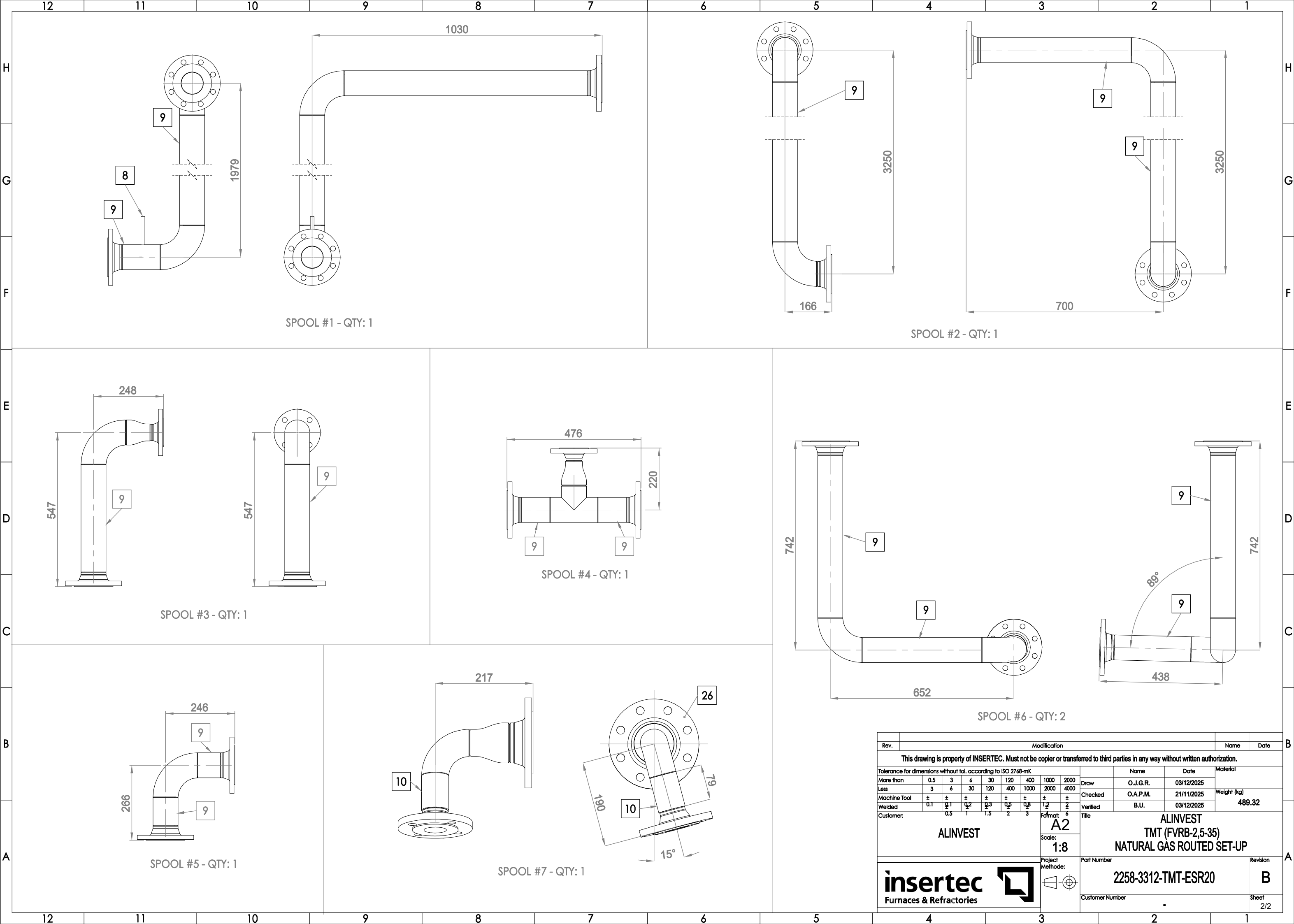


19	DIN934-M16-8	A	NUT M16	8			0.03	132	3.96
18	DIN127-M16-ST	A	WASHER M16	ST			0.01	132	1.32
17	DIN125-M16-ST	A	WASHER M16	ST			0.01	264	2.64
16	DIN933-M16x110-8.8	A	BOLT M16x110	8.8			0.21	16	3.36
15	DIN933-M16x100-8.8	A	BOLT M16x100	8.8			0.2	12	2.4
14	DIN933-M16x75-8.8	A	BOLT M16x75	8.8			0.16	104	16.64
13	DIN 2690		GASKET - KLINGERSIL C-4430 - 3 THK. - DN80	FIBERGLASS WINBR			-	18	0
11	DIN 2690		GASKET - KLINGERSIL C-4430 - 3 THK. - DN50	FIBERGLASS WINBR			-	3	0
10	EN 10216-1 - P235TR1		TUBE 2" - 2.9 THK - SEAMLESS	CARBON STEEL			0	158mm	0
9	EN 10216-1 - P235TR1		TUBE 3" - 3.2 THK - SEAMLESS	CARBON STEEL			0	9773mm	0
8	EN 10216-1 - P235TR1		TUBE 1/4" - 1.8 THK - SEAMLESS	CARBON STEEL			0	101mm	0
7	PID 920		COMPENSATOR DN 80 FOR GAS, AIR AND WATER, PE MAX. 10 BAR EXECUTION WITH LOOSE FLANGES DRILLED ACCORDING TO DIN 2501 PN 10 DIN-DVGW TESTED AND REGISTERED OPERATING TEMPERATURE - FOR AIR: -20°C BIS +500°C - FOR GAS: -20 BIS + 150°C - FOR WATER: 0° BIS + 100°C	COMMERCIAL			10.50	2	21
6	PID 930	-	CONTROL VALVE, MANUAL ADJUSTMENT REGULATING RATIO 10:1 EC TYPE EXAMINATION CERTIFICATE FOR MEDIUM TEMPERATURE RANGE -20°C BIS +60°C INTERMEDIATE FLANGE FLAP.	COMMERCIAL			4.76	2	9.52
5	PID 900+910	-	DOUBLE SHUT OFF VALVE 230 VAC, AS GAS SAFETY SHUT OFF VALVE ACC EN161 CLASS A 1ST VALVE FAST OPEN / FAST CLOSE, 2ND VALVE SLOW OPEN / FAST CLOSE FLOW ADJUSTABLE SOLENOID ACTUATOR 230 VAC 50/60 HZ, 24 VDC LIMIT SWITCH ELECTRICAL CONNECTION M20 MAX OPERATION PRESSURE 500 MBAR IP 65 EG CERTIFICATE.	COMMERCIAL			71.25	2	142.5
4	PID 890	-	BALL VALVE FOR MANUAL OPERATION IN GAS, AIR, WATER AND OIL RP THREAD; PE MAX 16 BAR ENVIRONMENTAL TEMP. -20°C TO +60°C EG APPROVAL AND CERTIFICATE.	COMMERCIAL			22.41	2	44.82
3	PID 830		CONTROL BUTTERFLY VALVE FOR INSTALLATION BETWEEN 2 FLANGES DN 50 PN 10 FOR NATURAL GAS JASTA GD6, DVGW CERT. COMPLETE ASSEMBLED WITH PNEUMATIC ACTUATOR, OPEN/CLOSE 3 - 5 SECONDS MAX. AND SIEMENS SIPART PS 2, TYPE: 6R5010-0NG01-0AA0-Z C20, 4-20 MA IN- AND OUTPUT, 24VDC.	COMMERCIAL			20.96	1	20.96
2	PID 810	-	ANNULAR CHAMBER ORIFICE ASSEMBLY: FOR INSTALLATION BETWEEN 2 FLANGES DIFFERENTIAL PRESSURE: 15 MBAR, DN80, 4 CONNECTIONS 1/4"	COMMERCIAL			1.82	1	1.82
1	PID 145		PRESSURE SWITCH RANGE 30 - 150 MBAR, OVERPRESSURE, VACUUM AND DIFFERENTIAL PRESSURE EL. CONNECTION WITH SCREW TERMINAL MANUAL ADJUSTMENT OF SET POINT EG CERTIFICATE.	COMMERCIAL			-	1	0
N°	PART NUMBER / ARTICLE CODE	REV.	DESCRIPTION	MATERIAL	MANUFACTURER	TAG	WEIGHT (KG)	QTY.	TOTAL WEIGHT (KG)



Rev.	Modification										Name	Date
This drawing is property of INSERTEC. Must not be copier or transferred to third parties in any way without written authorization.												
Tolerance for dimensions without tol. according to ISO 2768-mK								Name		Date	Material	
More than	0.5	3	6	30	120	400	1000	2000	Draw	O.J.G.R.	03/12/2025	Weight (kg) 489.32
Less	3	6	30	120	400	1000	2000	4000	Checked	O.A.P.M.	21/11/2025	
Machine Tool	±0.1	±0.1	±0.2	±0.3	±0.5	±0.8	±1.2	±2	Verified	B.U.	03/12/2025	
Welded	±0.5		±1	±1.5	±2	±3	±4	±6				
Customer:								Format:		Title		
ALINVEST								A2		ALINVEST TMT (FVRB-2,5-35) NATURAL GAS ROUTED SET-UP		
								Scale:				
								1:12				
								Project Methode:		Part Number		Revision
										2258-3312-TMT-ESR20		B
Furnaces & Refractories								Customer Number		Sheet		
										1/2		



Rev.	Modification										Name	Date				
This drawing is property of INSERTEC. Must not be copier or transferred to third parties in any way without written authorization.																
Tolerance for dimensions without tol. according to ISO 2768-mK											Name	Date	Material			
More than	0.5	3	6	30	120	400	1000	2000	Draw	O.J.G.R.	03/12/2025	Weight (kg) 489.32				
Less	3	6	30	120	400	1000	2000	4000	Checked	O.A.P.M.	21/11/2025					
Machine Tool	±	±	±	±	±	±	±	±	Verified	B.U.	03/12/2025					
Welded	0.1	0.1	0.2	0.3	0.5	0.8	1.2	2								
Customer:										0.5	1	1.5	2	3	6	Title
ALINVEST										Format:	A2			ALINVEST TMT (FVRB-2,5-35) NATURAL GAS ROUTED SET-UP		
										Scale:	1:8					
insertec Furnaces & Refractories										Project Methode:	Part Number					Revision
																2258-3312-TMT-ESR20
										Customer Number					Sheet	
										-					2/2	